



QUALITY DISTRIBUTION HEADQUARTERS | ACCOMODATING LEASE TERMS

860
SANDHILL AVE.
CARSON | CA 90746

FOR LEASE | 90,500 SF ON 3.77 ACRES

PROPERTY FEATURES

- 24'-26' Warehouse Clearance with Foil Insulation & Lighting
- .45/3000 High Pile Storage Sprinkler System
- 600 Amp, 277/480 Volt, 3-Phase Power Supply With Back-Up Generator
- (9) Dock High Truck Positions with One Ramp to Grade
- Approximately 7,000 SF Main Office Area
- Two-Story Foreman Offices with Showroom in Warehouse
- Excellent Industrial Park Location near Ports, LA International Airport & Freeway System
- APN 7319-004-024
- Occupancy - Immediate

GUIDED TOURS BY APPOINTMENT ONLY

FOR MORE INFORMATION, CONTACT:



MICHAEL COLLINS
VICE CHAIRMAN
P: 714.345.1014
MCOLLINS@DAUMCRE.COM
CADRE #00463740



DUSTIN HULLINGER
ASSOCIATE VICE PRESIDENT
M: 714.345.7882
DHULLINGER@DAUMCRE.COM
CADRE #02078021

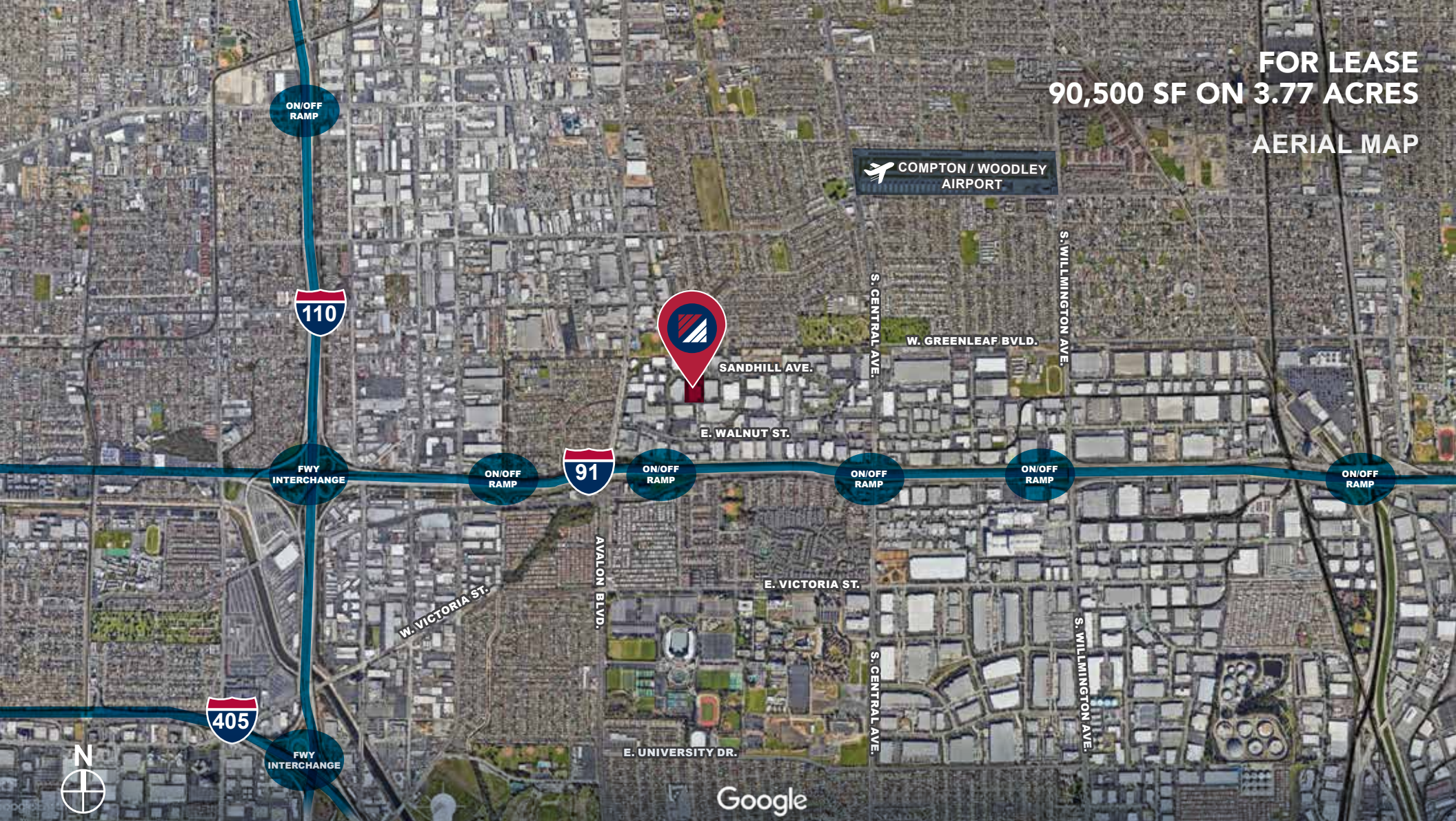


JACK STONE
ASSOCIATE VICE PRESIDENT
P: 310.538.6722
JSTONE@DAUMCRE.COM
CADRE #02070402



D/AQ Corp. #01129558. Maps Courtesy ©Google & ©Microsoft. Although all information is furnished regarding for sale, rental or financing from sources deemed reliable, such information has not been verified and no express representation is made nor is any to be implied as to the accuracy thereof, and it is submitted subject to errors, omissions, changes of price, rental or other conditions, prior sale, lease or financing, or withdrawal without notice.

FOR LEASE
90,500 SF ON 3.77 ACRES
AERIAL MAP



860
SANDHILL AVE.
CARSON | CA 90746

FOR MORE INFORMATION, CONTACT:

MICHAEL COLLINS
VICE CHAIRMAN
P: 714.345.1014
MCOLLINS@DAUMCRE.COM
CADRE #00463740

DUSTIN HULLINGER
ASSOCIATE VICE PRESIDENT
M: 714.345.7882
DHULLINGER@DAUMCRE.COM
CADRE #02078021

JACK STONE
ASSOCIATE VICE PRESIDENT
P: 310.538.6722
JSTONE@DAUMCRE.COM
CADRE #02070402


DAUM
COMMERCIAL REAL ESTATE SERVICES

**FOR LEASE
90,500 SF ON 3.77 ACRES**



860
SANDHILL AVE.
CARSON | CA 90746

FOR MORE INFORMATION, CONTACT:

MICHAEL COLLINS
VICE CHAIRMAN
P: 714.345.1014
MCOLLINS@DAUMCRE.COM
CADRE #00463740

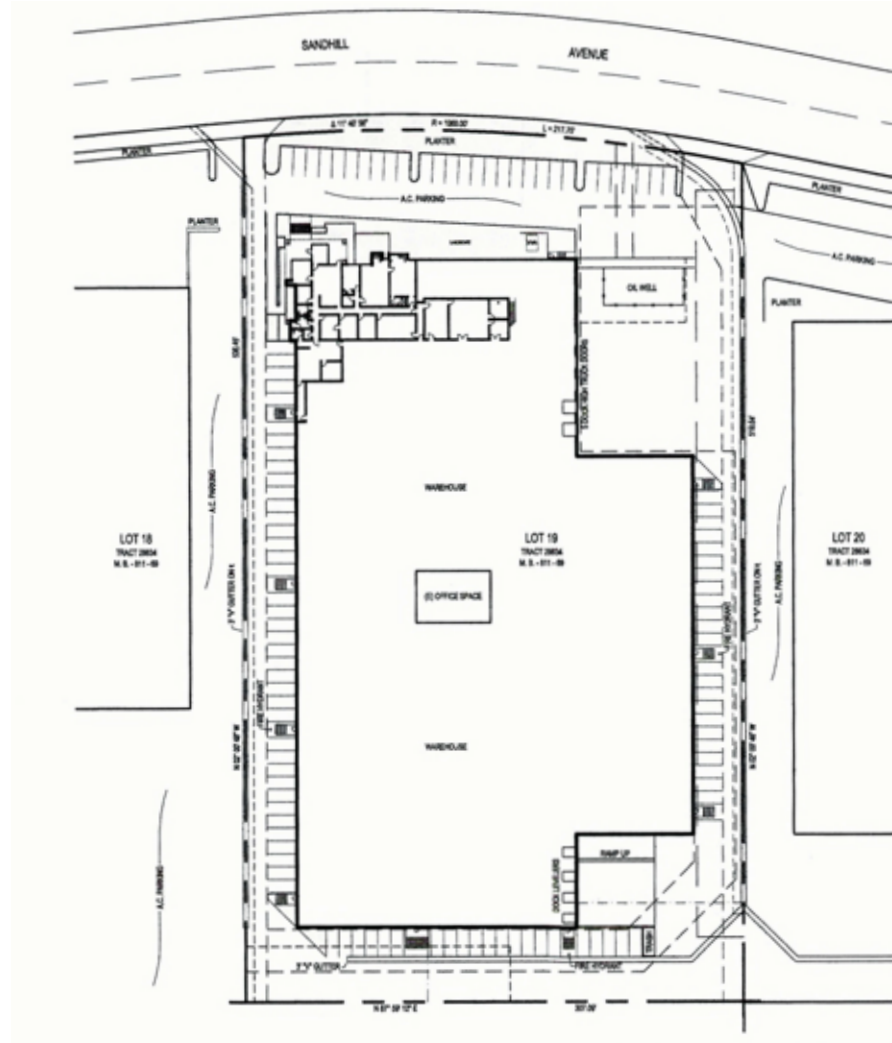
DUSTIN HULLINGER
ASSOCIATE VICE PRESIDENT
M: 714.345.7882
DHULLINGER@DAUMCRE.COM
CADRE #02078021

JACK STONE
ASSOCIATE VICE PRESIDENT
P: 310.538.6722
JSTONE@DAUMCRE.COM
CADRE #02070402

DAUM
COMMERCIAL REAL ESTATE SERVICES

FOR LEASE 90,500 SF ON 3.77 ACRES

SITE PLAN



860
SANDHILL AVE.
CARSON | CA 90746

FOR MORE INFORMATION, CONTACT:

MICHAEL COLLINS
VICE CHAIRMAN
P: 714.345.1014
MCOLLINS@DAUMCRE.COM
CADRE #00463740

DUSTIN HULLINGER
ASSOCIATE VICE PRESIDENT
M: 714.345.7882
DHULLINGER@DAUMCRE.COM
CADRE #02078021

JACK STONE
ASSOCIATE VICE PRESIDENT
P: 310.538.6722
JSTONE@DAUMCRE.COM
CADRE #02070402

DAUM
COMMERCIAL REAL ESTATE SERVICES

FOR LEASE 90,500 SF ON 3.77 ACRES

OFFICE FLOOR PLAN



860
SANDHILL AVE.
CARSON | CA 90746

FOR MORE INFORMATION, CONTACT:

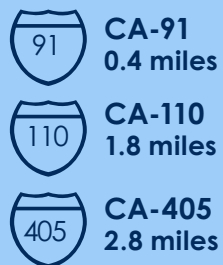
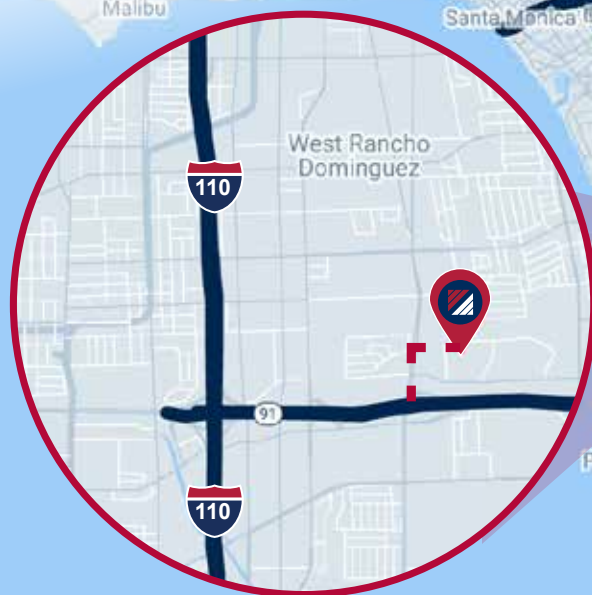
MICHAEL COLLINS
VICE CHAIRMAN
P: 714.345.1014
MCOLLINS@DAUMCRE.COM
CADRE #00463740

DUSTIN HULLINGER
ASSOCIATE VICE PRESIDENT
M: 714.345.7882
DHULLINGER@DAUMCRE.COM
CADRE #02078021

JACK STONE
ASSOCIATE VICE PRESIDENT
P: 310.538.6722
JSTONE@DAUMCRE.COM
CADRE #02070402



FOR LEASE
90,500 SF ON 3.77 ACRES
LOCATION MAP



Port of Long Beach
19.2 miles



Port of Los Angeles
19.9 miles



LAX Airport
20.4 miles

Google



860
SANDHILL AVE.
CARSON | CA 90746

FOR MORE INFORMATION, CONTACT:

MICHAEL COLLINS
VICE CHAIRMAN
P: 714.345.1014
MCOLLINS@DAUMCRE.COM
CADRE #00463740

DUSTIN HULLINGER
ASSOCIATE VICE PRESIDENT
M: 714.345.7882
DHULLINGER@DAUMCRE.COM
CADRE #02078021

JACK STONE
ASSOCIATE VICE PRESIDENT
P: 310.538.6722
JSTONE@DAUMCRE.COM
CADRE #02070402

DAUM
COMMERCIAL REAL ESTATE SERVICES