



REFURBISHMENT UNDERWAY

360-366

W. 132ND ST

LOS ANGELES | CA 90061

FOR LEASE ±37,500 SF

PROPERTY FEATURES

- ±37,500 SF Freestanding Building
- ±4,000 SF Office Space
- (4) Dock High Doors
- (2) Ground Level Loading Doors
- Sprinkler Calculation .33 GMP/SF Over 3,000 SF
- Secure Fenced Yard
- Permissive M2-IP LA County Zoning
- Quick Access to (110) & (105) Freeways
- Close Proximity to L.A. Port (16 Miles) & Long Beach Port (17.2 Miles)
- 400A, 120V, 240V, 3P, 4W
- 65 Free Surface Spaces Available
- Equipped with a Monitored Burglar Alarm, Electric Perimeter Fence, and Secure Gate

FOR MORE INFORMATION, CONTACT:



DUSTIN HULLINGER
ASSOCIATE V.P.
M: 714.345.7882
DHULLINGER@DAUMCRE.COM
CADRE #02078021



MICHAEL COLLINS
INVESTMENT DIVISION DIRECTOR
P: 714.345.1014
MCOLLINS@DAUMCRE.COM
CADRE #00463740



BRAD LEVIN
EXECUTIVE V.P. / PRINCIPAL
P: 310.538.6728
BLEVIN@DAUMCRE.COM
CADRE #01020885



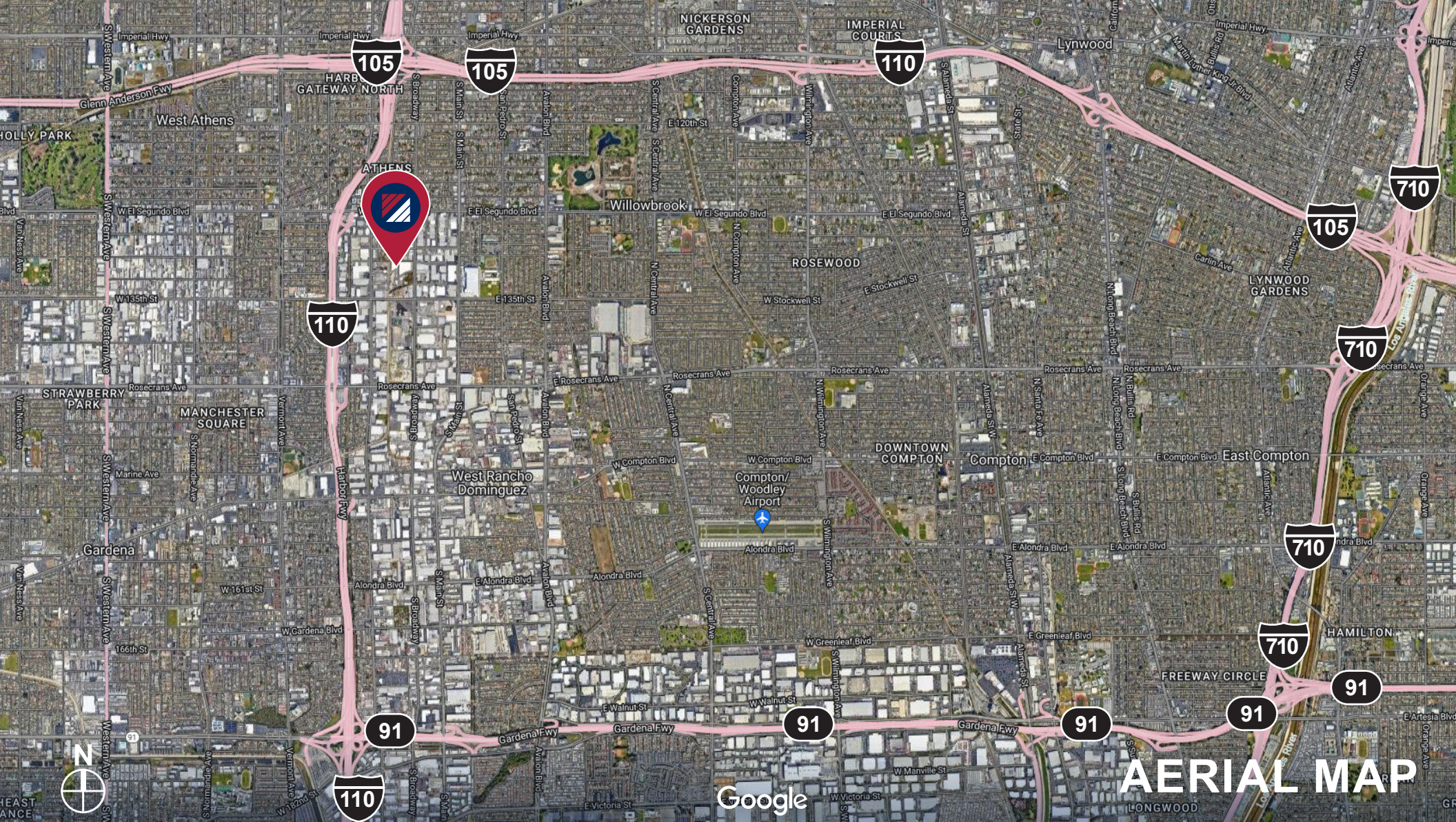
JACK STONE
ASSOCIATE V.P.
P: 310.538.6722
JSTONE@DAUMCRE.COM
CADRE #02070402

D/AQ Corp. #01129558. Maps Courtesy ©Google & ©Microsoft. Although all information is furnished regarding for sale, rental or financing is from sources deemed reliable, such information has not been verified and no express representation is made nor is any to be implied as to the accuracy thereof, and it is submitted subject to errors, omissions, changes of price, rental or other conditions, prior sale, lease or financing, or withdrawal without notice.



OWNED AND MANAGED BY:





360-366

W. 132ND ST

LOS ANGELES | CA 90061

FOR MORE INFORMATION, CONTACT:

DUSTIN HULLINGER
ASSOCIATE V.P.
M: 714.345.7882
DHULLINGER@DAUMCRE.COM
CADRE #02078021

MICHAEL COLLINS
INVESTMENT DIVISION DIRECTOR
P: 714.345.1014
MCOLLINS@DAUMCRE.COM
CADRE #00463740

BRAD LEVIN
EXECUTIVE V.P. / PRINCIPAL
P: 310.538.6728
BLEVIN@DAUMCRE.COM
CADRE #01020885

JACK STONE
ASSOCIATE V.P.
P: 310.538.6722
JSTONE@DAUMCRE.COM
CADRE #02070402

D/AQ Corp. #01129558. Maps Courtesy ©Google & ©Microsoft. Although all information is furnished regarding for sale, rental or financing is from sources deemed reliable, such information has not been verified and no express representation is made nor is any to be implied as to the accuracy thereof, and it is submitted subject to errors, omissions, changes of price, rental or other conditions, prior sale, lease or financing, or withdrawal without notice.

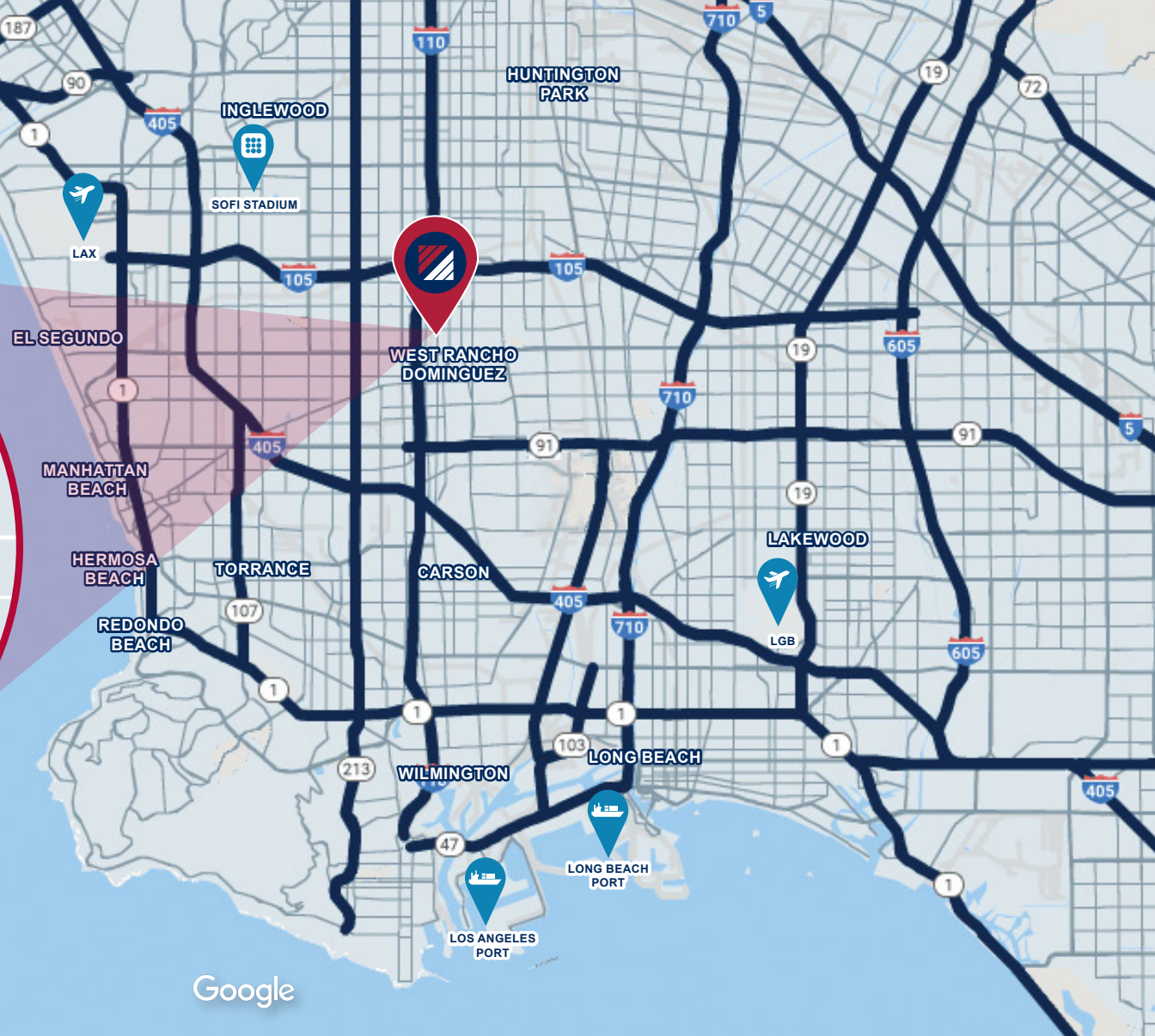
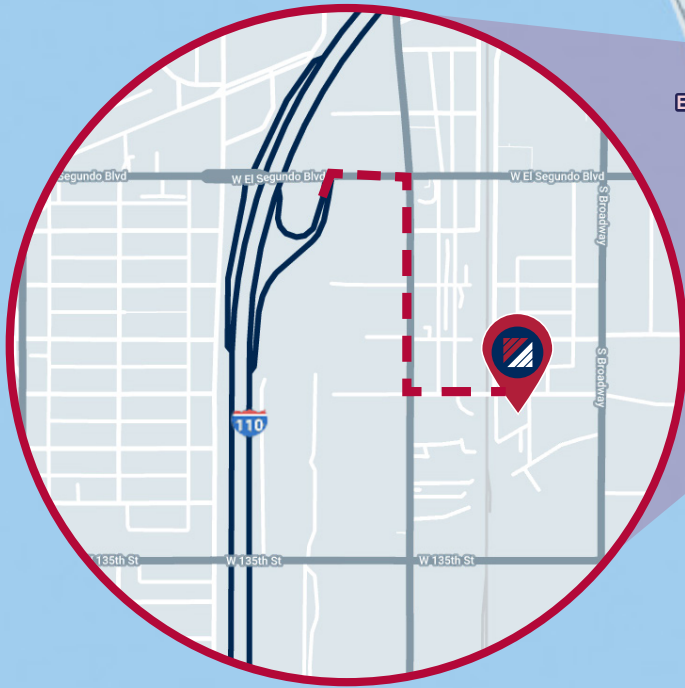


OWNED AND MANAGED BY:



FOR LEASE ±37,500 SF

LOCATION MAP



CA-110
0.5 miles



Port of Los Angeles
16 miles



CA-105
1.2 miles



Port of Long Beach
17.2 miles



Google

360-366

W. 132ND ST

LOS ANGELES | CA 90061

FOR MORE INFORMATION, CONTACT:

DUSTIN HULLINGER
ASSOCIATE V.P.
M: 714.345.7882
DHULLINGER@DAUMCRE.COM
CADRE #02078021

MICHAEL COLLINS
INVESTMENT DIVISION DIRECTOR
P: 714.345.1014
MCOLLINS@DAUMCRE.COM
CADRE #00463740

BRAD LEVIN
EXECUTIVE V.P. / PRINCIPAL
P: 310.538.6728
BLEVIN@DAUMCRE.COM
CADRE #01020885

JACK STONE
ASSOCIATE V.P.
P: 310.538.6722
JSTONE@DAUMCRE.COM
CADRE #02070402

D/AQ Corp. #01129558. Maps Courtesy ©Google & ©Microsoft. Although all information is furnished regarding for sale, rental or financing is from sources deemed reliable, such information has not been verified and no express representation is made nor is any to be implied as to the accuracy thereof, and it is submitted subject to errors, omissions, changes of price, rental or other conditions, prior sale, lease or financing, or withdrawal without notice.



OWNED AND MANAGED BY:
Hager Pacific
Properties